

# ECW Food Asset Map–Web Application Instructions Agriculture in the Classroom

Dillon Consulting Limited  
The Million Meals Campaign  
ECW Inc.



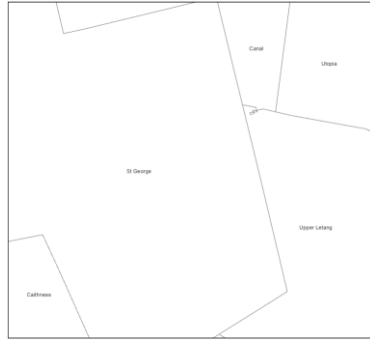
# GIS: The Power of “Where”

GIS stands for “**GEOGRAPHIC INFORMATION SYSTEMS** – a framework for gathering, managing, analyzing, and communicating spatial data.

GIS can be thought of like a digital stack of layers all containing different information for the same location...



Satellite Imagery  
**(The Base)**



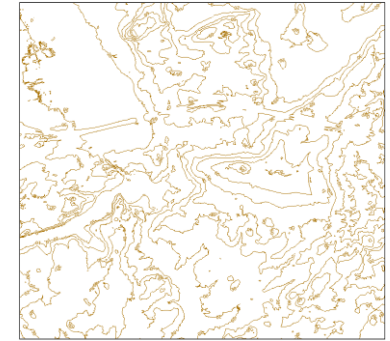
Community  
Boundaries



Building  
Footprints



Watercourses,  
Waterbodies, &  
Wetlands



10m Elevation  
Contours

These geographic systems allow us to uncover patterns and relationships that inform and improve planning and decision making

# How are GIS systems used today?

## CLIMATE CHANGE

Predicting how rising sea levels might affect areas and individuals in coastal towns.

## BUSINESS

Answering questions like: Where should a new grocery store be built? by analyzing demographics and transportation networks.

## EMERGENCY SERVICES

Emergency Response: Helping 911 dispatchers find the fastest route to an accident during a snowstorm.

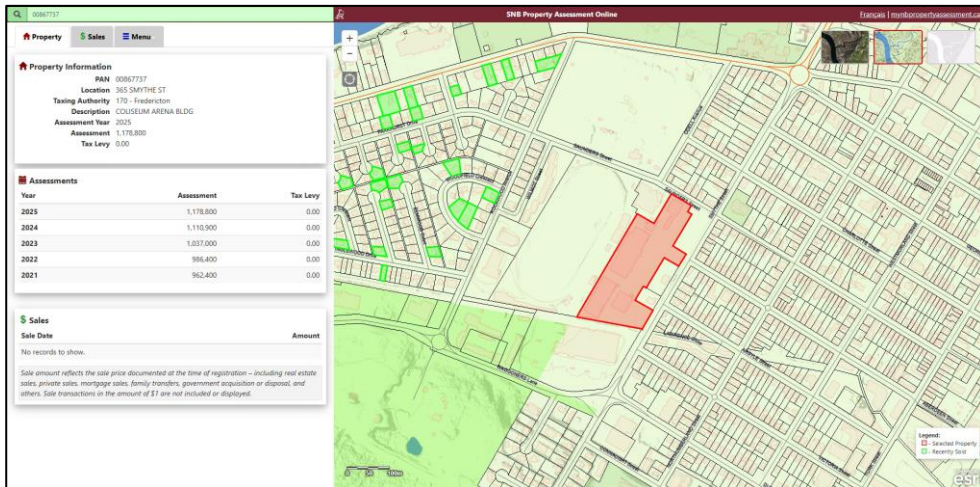
## NATURAL RESOURCES

Mapping NB forests to decide where to harvest sustainably or where to protect wildlife habitats (like the Atlantic Salmon)

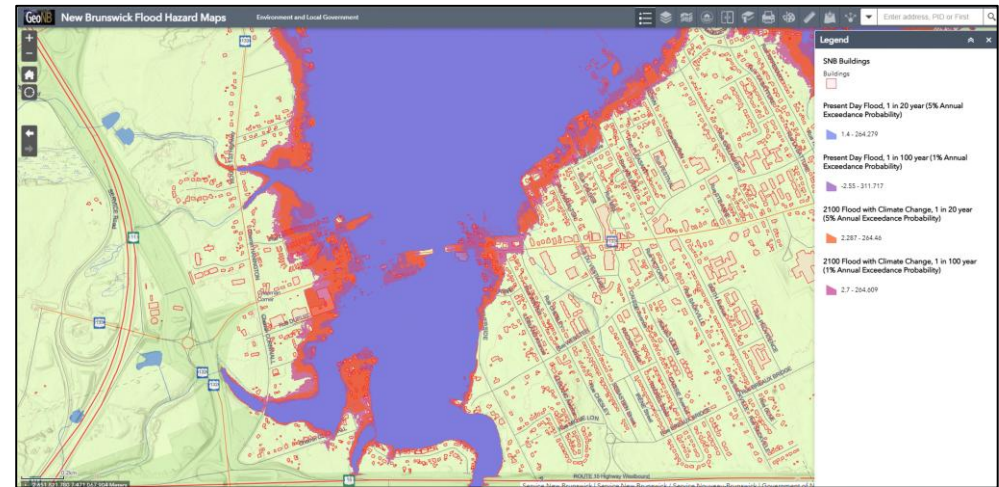
These are just a few examples; the applications are nearly endless!  
*If it happens **somewhere**, GIS can help us understand it better.*

# Web Mapping Applications – GIS & Communication

A **Web Mapping Application** is a website or mobile app that uses the internet to let you view, explore, and interact with GIS data.



Service New Brunswick Property Assessment Online App



New Brunswick Flood Hazard Maps

It is more than just a digital or paper map as it includes the **tools** (buttons, search bars, and sliders) that let you interact with that map.

# Navigating Home Screen

**ECW Project-Village** Local Food Connections Map (Agriculture in the Classroom) Dillon Consulting Limited

**Find address or place**  
Search for addresses or places on the map

**Coordinates**  
To display the coordinates of a location on the map (Latitude, Longitude)

**Map Navigation**  
To view information about Web Application Instructions and Navigation

**Edit**  
To add or edit resource organizations (Points) on the map

**Query**  
To query the data by Name or Asset category or Local Government

**Zoom In/Out**  
Tool to zoom extent in and out

**Default Extent**  
Return to original map extent

**Locate**  
To know your current location

**Layer List**  
Turn layers off/on

**Legend**  
View layer symbology and description

**Basemap Gallery**  
Select different basemaps

**Print**  
Print current map extent

**About**  
To view information about the project

**Attribute Table**  
To view the attribute table

**Food Production**

- Farm
- Greenhouse
- Sugarmaker
- Beekeeper
- Community Garden
- Local Products
- Chocolatier
- Vineyard

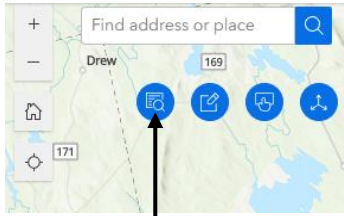
**Food Retail Service**

- Bakery
- Retail Grocery Store Chain
- Butcher/Abattoir
- Brewery
- Chain
- Take-out
- Farm Stands
- Corner Stores
- Fisheries Products

**Food Access**

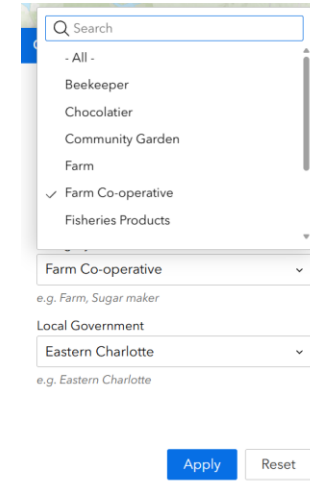
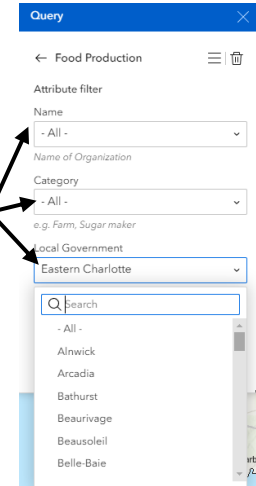
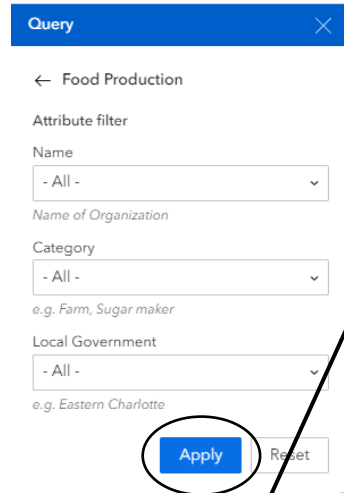
10 km | Esri, CGIAR, USGS | ... of New Brunswick, Esri Canada, Esri, TomTom, Garmin, SafeGraph, FAO, METI/NASA, USGS, EPA, ... Powered by Esri

# Query Widget Explanation – Defining the Search

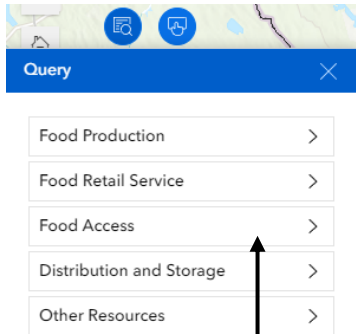
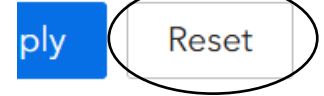


## Step 1

Click on magnify glass icon in the top Left corner.



**Note**  
You can hit “Reset” at any point to start a new query.

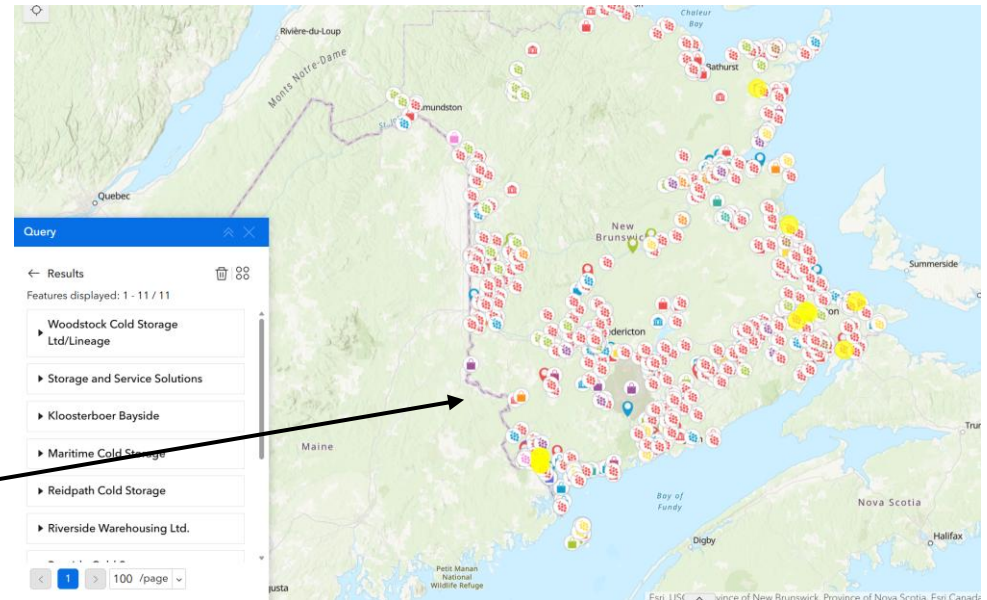


## Step 2

Select “Food Production” or “Food Retail Service” or the food asset category of your choice

## Step 3

Select from one or more of the three options using the drop-down list. Then hit enter or click on “Apply”, the map will zoom to searched item and takes you to Results page with a list and icons highlighted in yellow.



# Query Widget Explanation – Navigating the Results

## Step 4

Select from the result list for more information. Click on four circle icon on top right to get more function to zoom, view in table, export etc. Press Trash Can button to clear search.

## Note

You can click the trash can icon to clear the results.

Press "View in Table" to see the data in tabular format.

Click here to open the table and explore the data in tabular format.

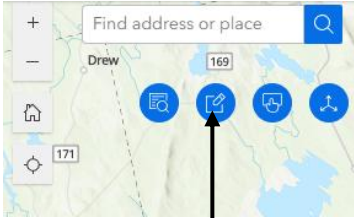
The screenshot shows the Query widget interface. On the left, a list of search results is displayed, including 'Oven Head Salmon Smokers', 'Canada Green Nursery & Garden Center', 'Brettlynnfarms', 'Hawkins Farms', 'Clark's Blueberry Farm', and 'Granite Hill Farm'. A context menu is open over the 'View in table' option, showing options: 'Zoom to', 'View in table', 'Pan to', 'Show on map', and 'Export all'. A trash can icon is visible in the top right corner of the widget. The background is a map of a coastal region with various locations marked.

The screenshot shows the Query widget interface with the table view open. The table displays the following data:

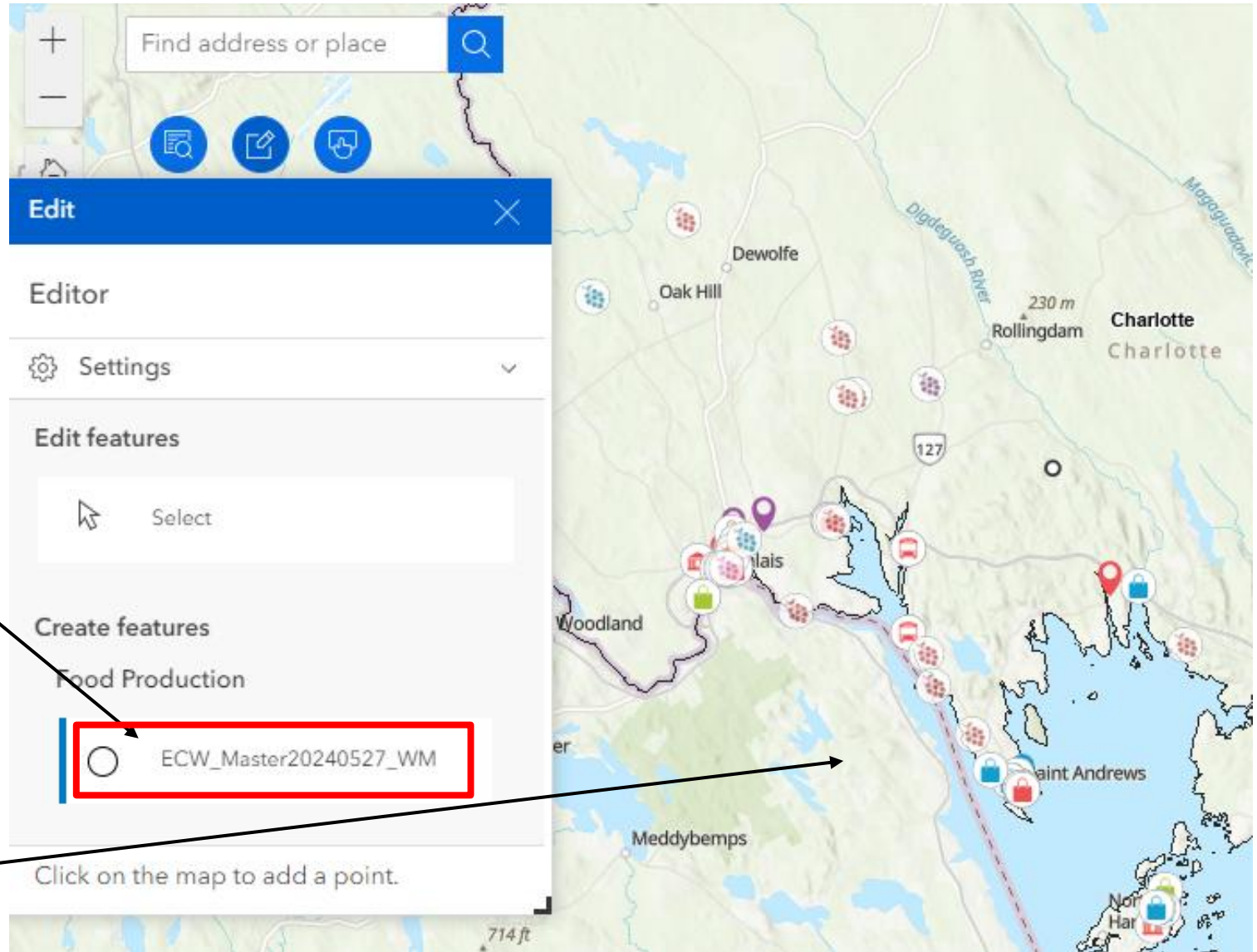
OBJECTID	Name	Asset Category	Category	Tags	L
62	Oven Head Salmon Smokers	Food Production	Farm	seafood, smoked	10
64	Canada Green Nursery & ...	Food Production	Greenhouse	u-pick, tomatoes, greenho...	88
169	Brettlynnfarms	Food Production	Beekeeper	honey	76
170	Hawkins Farms	Food Production	Farm	blueberries, berries, fruit, ...	65
244	Clark's Blueberry Farm	Food Production	Farm	blueberries, berries, fruit, ...	36

The table is part of a larger interface with tabs for 'Food Access', 'Other Resources', 'Distribution and Storage', and 'Food Production result'. A trash can icon is also visible in the top right corner of the widget.

# Edit Widget Explanation - Adding New Features (Part I)



**Step 1**  
Click on Edit icon in the top Left corner.



**Step 2**  
To add a new feature, click here. Click the feature under Food Category you are adding to.

**Step 3**  
On the map, zoom to the location and click to add a point.



# Edit Widget Explanation - Adding New Features (Part II)

Edit

< Create features

Settings

Name

Asset Category

- Food Production
- Food Retail Service
- Food Access
- Other resources
- Distribution and Storage

Square Footage

Create

## **Step 4**

Once the point is added, form appears. Enter information in the available fields. Some fields have drop downs and hit Create. A new point gets added with suitable symbol.

Edit

< Create features

Settings

Name

Asset Category

- Food Production
- Food Retail Service
- Food Access
- Other resources
- Distribution and Storage

Square Footage

Create

Discard edits

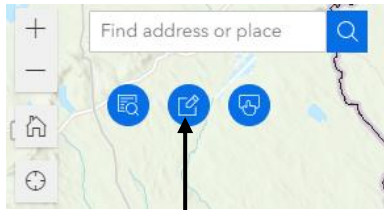
Updates to this feature will be lost.

Continue editing Discard edits

## **Note**

In case you do not want to add the point, click on this back arrow and hit "Discard edits".

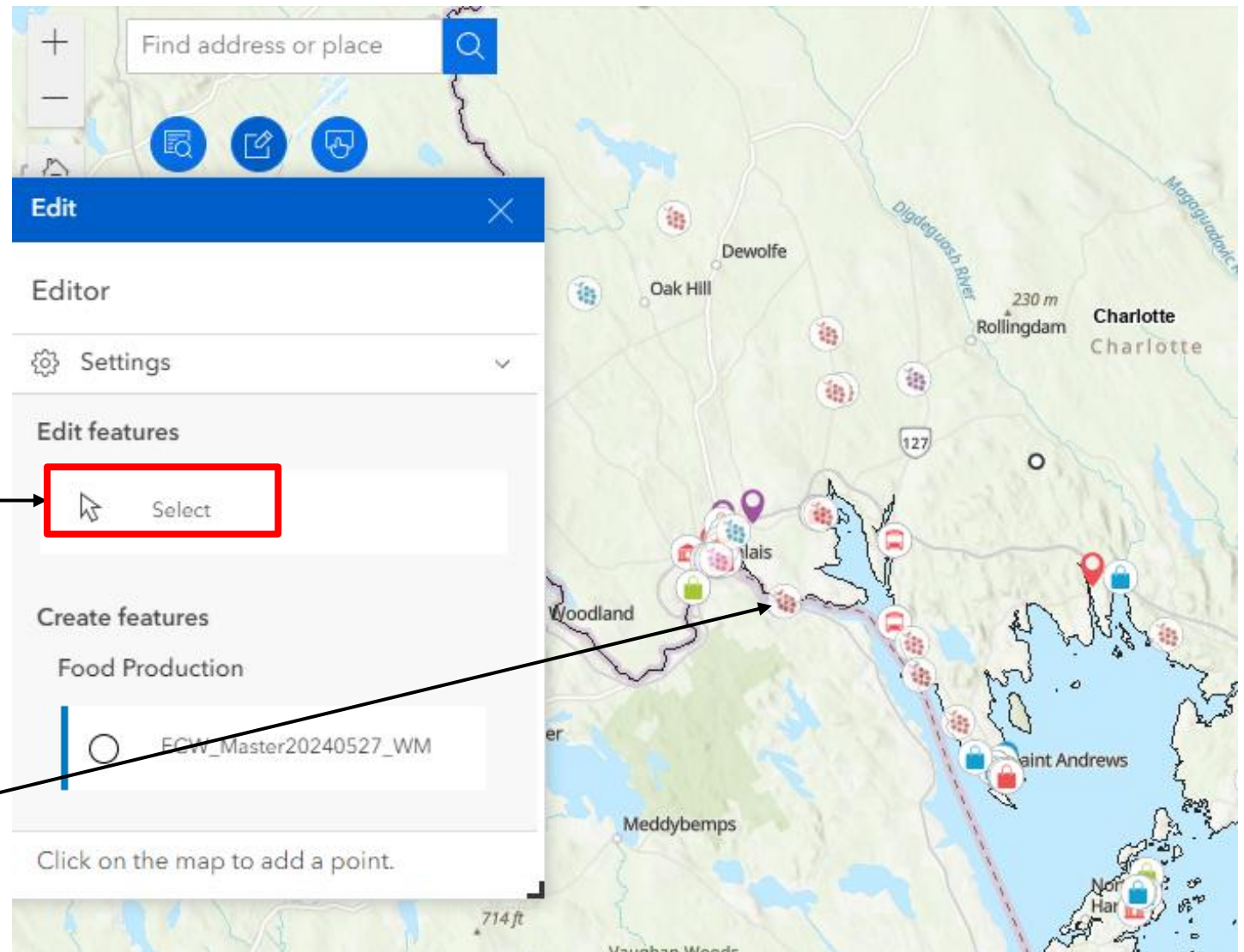
# Edit Widget Explanation - Editing Existing Features (Part I)



**Step 1**  
Click on Edit icon in the top left corner.

**Step 2**  
To Edit an existing feature, click here.

**Step 3**  
On the map, zoom to the location and click on the icon that needs edit.



# Edit Widget Explanation - Editing Existing Features (Part II)

**Edit**

< Edit feature

Settings

Name  
Gallant Farms

Asset Category  
Food Production

Category  
Farm

Tags  
vegetable, produce, fruit, u-pick

Location  
110 Donald Road Dufferin New Brun

Square Footage

Update Delete

## Step 4

Once the point is selected, a form appears. All the pre-filled fields become visible. Edit the fields. Click update.



## Alternate Option: Edit in the Table

Click on this icon at the bottom of the map to edit existing features in the table.

Food Retail Service

- Farmer's Market
- Restaurant
- Small Scale Grocers
- Bakery

Food Production Food Retail Service Food Access Other Resources Distribution and Storage

Name	Asset Category	Category	Tags	Location	Square Footage	Website
Ganong Chocolatier Retail	Food Production	Chocolatier	take-out, chocolate	73 Milltown Blvd., St. Ste...		View
McKnight's U-Pick Farm	Food Production	Farm	eggs, tree, u-pick	20 Benson Rd., Oak Bay, N...		View
Magellan Aqua Farms Inc.	Food Production	Farm	kelp, seaweed	7 Tilley St. St. Stephen, NB...		View
Bridges Brother Ltd.	Food Production	Farm	fishing, hunting, blueberries	172 Milltown Blvd., St. Ste...		View
Meddybemps Greenhouse	Food Production	Greenhouse	Bayberry plants, greenhouse	42 Route 170 Dufferin St...		View

**Edit**

< Edit feature

Settings

Name  
Gallant Farms

Asset Category  
Food Production

Category  
Farm

## Note

In case you do not want to add the point, click on this back arrow and hit "Discard edits".

**Edit**

< Create features

Settings

Name

Asset Category

Category

Tags

Location

Discard edits  
Updates to this feature will be lost.

Continue editing Discard edits